



MIRANDA SELWOOD

Miranda completed 10 years at the Julie-Ann Lucas School of Dance (training in Jazz, Tap, Singing, Drama and Ballet) before moving to Mackay to complete a Bachelor of Music Theatre at the Central Queensland Conservatorium of Music. Miranda has gained skills and experience in numerous productions and endeavours in University and beyond. Her experience was not limited to the performance aspects of the Theatre; Miranda always took an interest in the process and worked in backstage and artistic roles as well, including Stage Management, Sound Tech, Choreography, Directing, Production Management, Event Management and even a little Writing. Miranda has a true appreciation for the pure joy of the Broadway Musical and a special place in her heart for 42nd Street (the movie, the musical and the place!)

THEATRICAL CREDITS

2009	CLOSER THAN EVER	Woman 1/Director	Mirthful Productions
2008	NUNSENSE	Sister Leo	Brisbane Arts Theatre
2007	CAROUSEL	Ensemble	Oz People
2004	THE ROCKY HORROR SHOW	Ensemble	On The Boards Theatre Co.
2004	A SWELL PARTY	Anne	Stage Door Dinner Theatre
2002	KISS ME KATE	Lily/Kate	CQCM
2002	CHESS	Florence	CQCM
2001	THE SOUND OF MUSIC	Elsa (Baroness)	CQCM
2001	THE PAJAMA GAME	Babe	CQCM
1999	SINGING IN THE RAIN	Ensemble/Zelda (us)	Ocean Theatre Company
1998	DAMES AT SEA	Joan	Brisbane Arts Theatre

OTHER CREDITS

2009	Founded MIRTHFUL PRODUCTIONS .
2008—2009	Treasurer of the BRISBANE ARTS THEATRE .
2008—2009	Vocal Teacher at JULIE-ANN LUCAS SCHOOL OF DANCE .
2005—2007	Cruise Director's Staff with ROYAL CARIBBEAN CRUISE LINES .
2003	SOLO CABARET : As Time Goes By...
2003	Stage Manager for CQCM's CHICAGO .
2002	Singer in UPTAMISCHIF (Pop Duo)
2000—2002	Featured Performer, Assistant Director, Director and Production Manager for CHOICES Educational Schools Tour, a combined project of CQCM, Queensland Police and Queensland Health.



ROZ PAPPALARDO

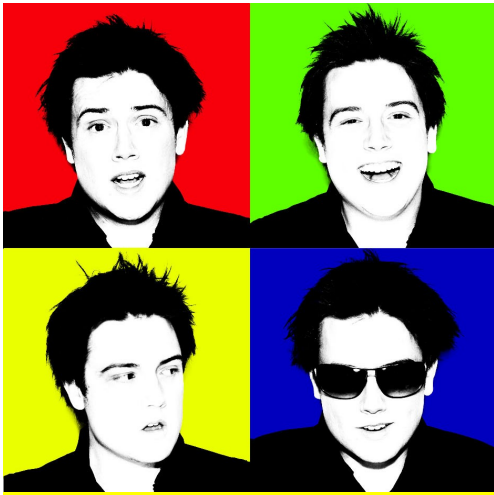
Roz was born to sing. Whether in a contemporary folk act on festival stages across the world, a country rock act just releasing their first record, or on the theatre stage, she must sing. Roz is one half of Queensland's favourite contemporary folk duo, Women In Docs. She has also recently released her first solo album, THIS LIFEBOAT, to critical acclaim. Her love of performance has spilled over onto the musical theatre stage where Roz has played the likes of Rizzo (Grease), Mary Magdalene (Jesus Christ Superstar) and Sister Hubert in Nunsense. Vigorous touring and a couple thousand on stage appearances across the world have been Roz's unusual musical theatre training ground.

THEATRICAL CREDITS

2009	CLOSER THAN EVER	Woman 2	Mirthful Productions
2008	NUNSENSE	Sister Hubert	Brisbane Arts Theatre
2007	JESUS CHRIST SUPERSTAR	Mary Magdalene	Beenleigh Theatre Co.
2000	GREASE	Rizzo	NQOMT Townsville
1999	PIRATES OF PENZANCE	Ensemble	NQOMT Townsville
1998	EVITA	Ensemble	NQOMT Townsville

OTHER CREDITS

2007—current	Song-writing facilitator in remote regional communities.
2006—current	ROZ PAPPALARDO & THE WAYWARD GENTLEMEN : Original Alt/Country Band
1997—current	WOMEN IN DOCS : Original Contemporary Folk Band.
2006	Co-Director for GREASE , Southern Cross Catholic College.
1998	Fly Crew for SOUTH PACIFIC , Choral Society (Townsville).
1997	Sound Crew for LES MISERABLES & BEST LITTLE WHOREHOUSE IN TEXAS (Townsville).
1994	Co-Director for LEAVING , Ignatius Park College (Townsville).



TONY CAMPBELL

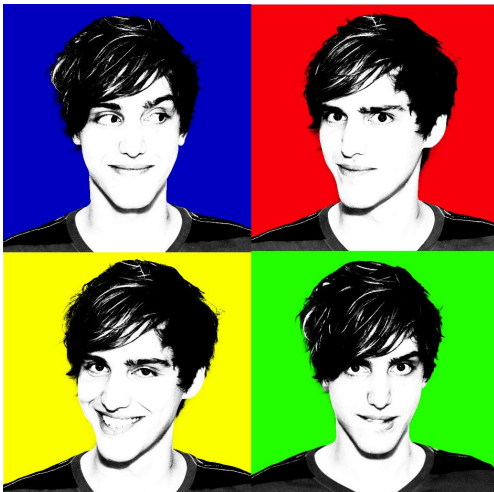
Tony graduated from the Queensland University of Technology in 2007 with a Bachelor of Creative Industries in Drama. He applies his university training with constant performance commitments. He has worked as an actor, singer, dancer, director and producer on projects throughout Queensland, including creating and producing his own Cabaret which raised funds for charity. Although his interests and projects have always been highly varied, most of Tony's recent experience has been in Theatre Restaurant and Musical Revues or Cabaret. He is constantly in demand for roles and has a passion for creating new and innovative work and supporting local independent theatre. Tony is passionate about the development of theatre as a sustainable and accessible entertainment within Australia.

THEATRICAL CREDITS

2009	CLOSER THAN EVER	Man 1/Choreographer	Mirthful Productions
2009	DEATHTRAP	Clifford Anderson	Stage Door Dinner Theatre
2008	ME AND MY GIRL	Bill Snibson	Prima
2008	THE SOUND OF MUSIC	Rolf Gruber	Savoyards
2008	SHOWSTOPPERS	Soloist	Ignations Musical Society
2007	GREASE	Kenecki	Prima
2007	NO BARE FEET	Director	Bronte Coates
2006	ANNIE	Rooster	Prima
2006	MYSELF: SILENCE	Collaborative Artist	QUT
2005	LOVEPUKE	Ivan	QUT
2004	ADVANCED SCREENING	William	Markwell Presents

OTHER CREDITS

2007—current	Performer with Cabaret/Burlesque Ensemble, THE RAG TAG REVUE .
2009	Bille Brown's Assistant Director for THE HYPOCHONDRIAC at QUT Gardens Theatre.
2008	Produced and performed Charity Cabaret: ANOTHER NAME FOR BROADWAY at The Globe Theatre.
2005	Entertainer at DREAMWORLD , Gold Coast Theme Park.
2007	Performer/Deviser/Director for TAKE ME BACK TO MANHATTAN .
2007	Drama/Song and Dance/English Teacher for THE KBS WINTER ENGLISH CAMP in Korea.
2005—2007	Over 100 shows at GROUCHO'S THEATRE RESTAURANT .
2005—2007	BACHELOR OF CREATIVE INDUSTRIES—DRAMA at QUT.



JAMES DOBINSON

James has worked on- and off-stage in musical theatre, legitimate theatre and opera in Australia and the USA. As Artistic Director, Resident Music Director and Performer for the Warehouse Theatre Company he has received local, national and international coverage, including strongly positive reviews in periodicals such as New York's *The Sondheim Review*. He holds a Bachelor of Music in Voice from the Queensland Conservatorium. His most recent musical, *Scissors, Paper...Rock!* played to packed houses in 2008 and is being reworked for a New York premiere in the near future. He has also been commissioned by Outcast Opera to write a new full-length operatic project to premiere at the end of 2010.

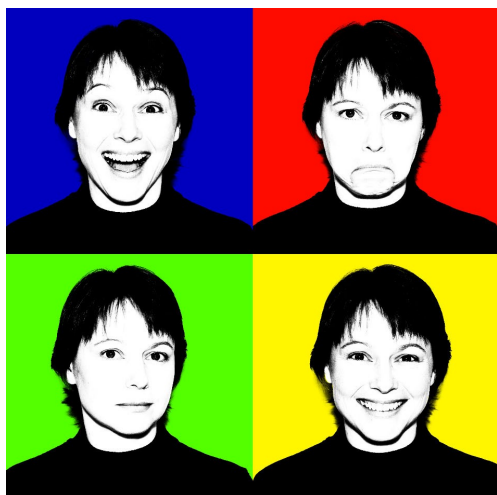
THEATRICAL CREDITS

2009	CLOSER THAN EVER	Man 3	Mirthful Productions
2009	MACBETH: THE ROCK OPERA	Banquo/US Macbeth	Dianne Gough
2008	THE DUVETS	Pianist	Warehouse
2006	THE FULL MONTY	Malcolm MacGregor	Lickety-Split
2006	PARADE	Britt Craig	Warehouse
2006	RENT	Angel	Starlight
2005	INTO THE WOODS	Rapunzel's Prince/Wolf	Harvest Rain
1995	ASSASSINS	Balladeer/Lee Harvey Oswald	Warehouse
...and many more			

OTHER CREDITS

2009	Musical Director, Conductor and Orchestrator on MUSIC FROM MARS for Sing-A-Morning.
2008	Musical Director and Vocal Arrangements on THE DUVETS for Warehouse.
2008	Music, Lyrics and Orchestrations on SCISSORS, PAPER... ROCK! for Underground.
2007	Musical Director on WITCHES OF EASTWICK for Turkish Delight.
2004	Founded WAREHAUS THEATRE COMPANY .

MICHELLE WESTON



Michelle's love of theatre began in high-school musicals and has continued through many performance opportunities ever since including theatre-restaurant, drama, farce, orchestra member and dance. In the first year of her Bachelor of Music Theatre degree, Michelle was appointed Stage Manager for the annual musical Fiddler on the Roof and the combined choral, instrumental and mime performance Northern Lights, part of the 1999 Queensland Biennial Festival of Music. Credits also include the Annual Prize in Theatre Studies for 2000 and 2001 and in the same years Michelle produced, directed and performed in a government-grant funded touring educational performance for year 12 students called Choices, which went on to win a silver Commissioner's Lantern Award for the Central Queensland region.

THEATRICAL CREDITS

2009	CLOSER THAN EVER	Stage Manager/Assistant Director	Mirthful Productions
2003	PASTICHE	Viola Vionysse	Kucom Theatre Inc.
2002	THE HAUNTED THROUGH LOUNGE & RECESSED DINING NOOK AT FARDALE CASTLE	Dolly/Stage Manager	Kucom Theatre Inc.
2001	THE SOUND OF MUSIC	Ensemble/New Postulate	CQCM
2001	THE PAJAMA GAME	Brenda	CQCM
1999	CHILL OUT	Ensemble	CQCM
1999	FIDDLER ON THE ROOF	Stage Manager	CQCM
1998	COMPANY	Stage Crew	Brisbane Arts Theatre
1995	CHARLIE GIRL	Lady Fiona	Mousetrap Theatre
1995	PACKING IT	Jane (Mother)	Act1 Theatre

OTHER CREDITS

2009	Local Champion (Pre-Tour Publicity and Location Research) for GREASE THE MEGA MUSICAL , Grease on Tour.
2001	Coordinator, Publicity Spokesperson, Management Committee Chair and Performer for ONE STEP FURTHER, YOUTH DANCE COMPANY .
2000—2001	Featured Performer, Production Manager, Director and Publicity Liaison for CHOICES Educational Schools Tour, a combined project of CQCM, Queensland Police & Queensland Health. This project won the COMMISSIONER'S SILVER LANTERN AWARD in 2001.